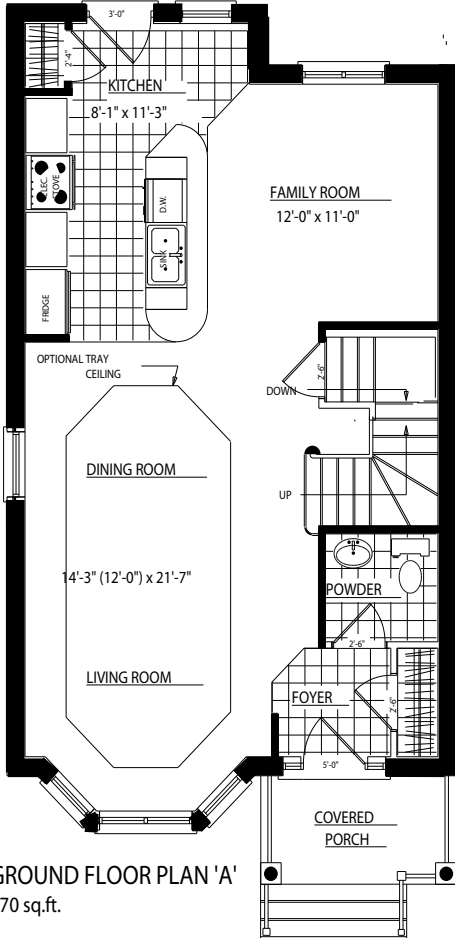


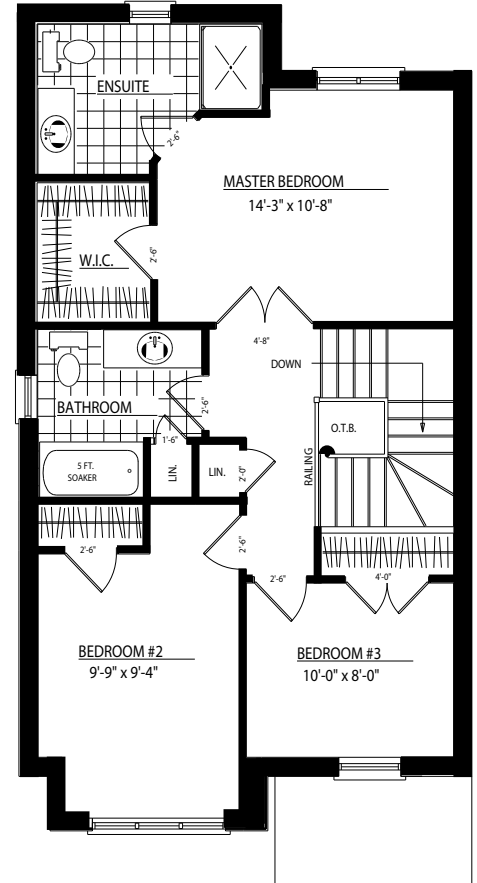
# KINGS BRIDGE - PLAN C



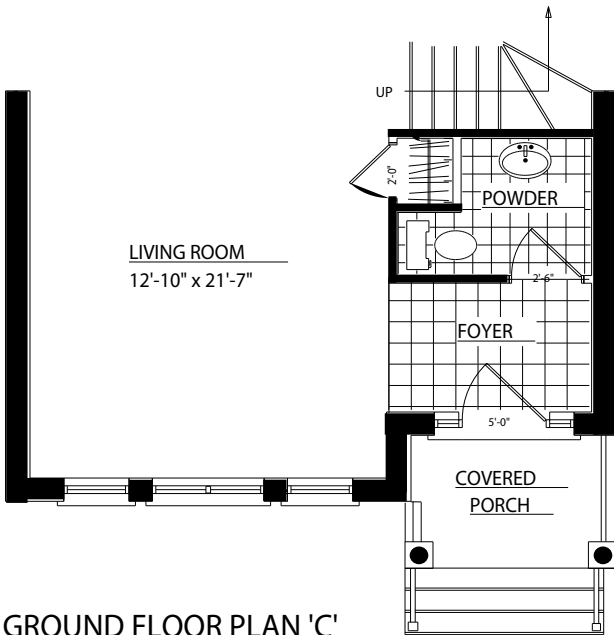
**FRONT ELEVATION 'C'**  
TOTAL AREA = 1551 sq.ft.



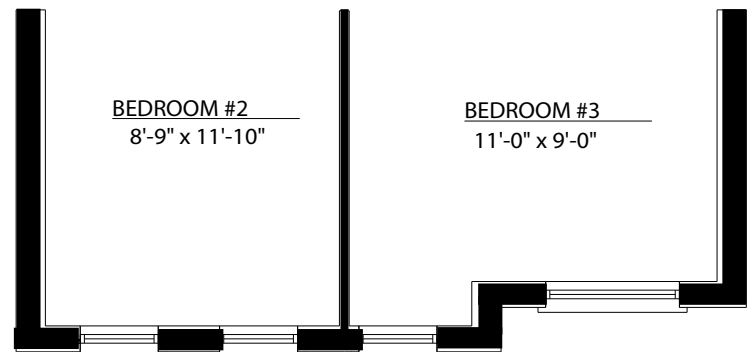
**GROUND FLOOR PLAN 'A'**  
770 sq.ft.



**SECOND FLOOR PLAN 'A'**  
772 sq.ft.  
- 8 sq.ft. OPEN SPACE  
= 764 sq.ft.



**GROUND FLOOR PLAN 'C'**  
786 sq.ft.



**SECOND FLOOR PLAN 'C'**  
789 sq.ft.  
- 8 sq.ft. OPEN SPACE  
= 781 sq.ft.