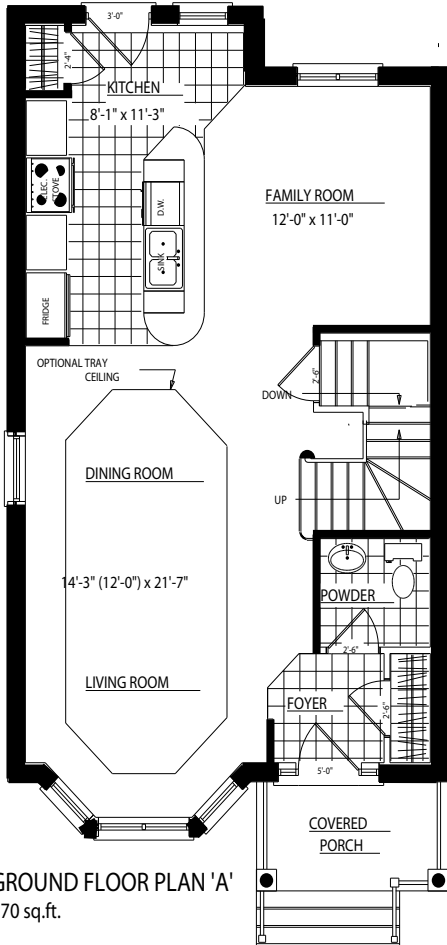


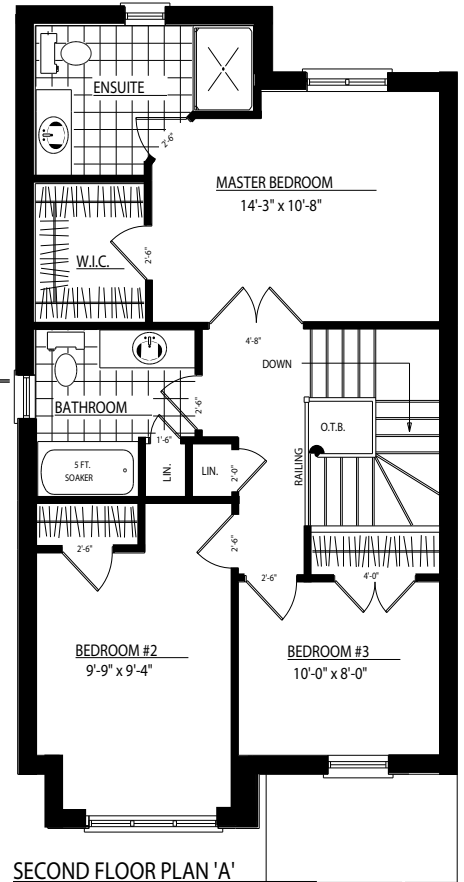
KINGS BRIDGE - PLAN B



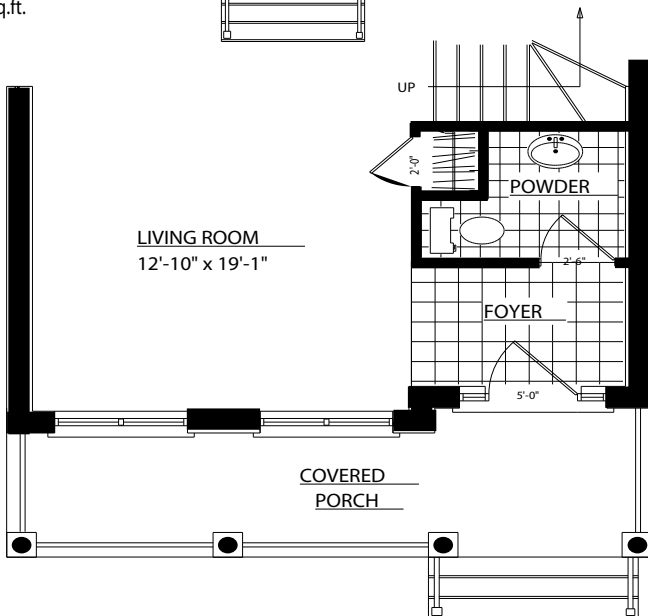
FRONT ELEVATION 'B'
TOTAL AREA = 1537 sq.ft.



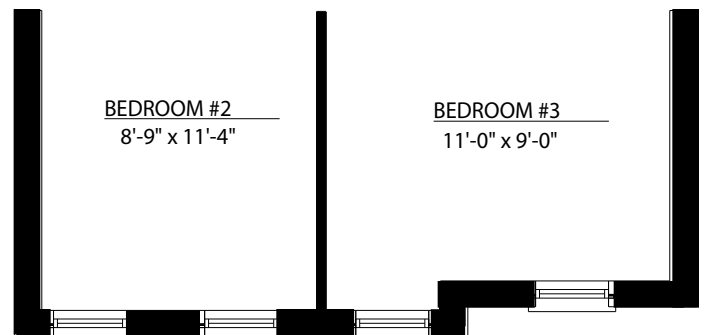
GROUND FLOOR PLAN 'A'
770 sq.ft.



SECOND FLOOR PLAN 'A'
772 sq.ft.
- 8 sq.ft. OPEN SPACE
= 764 sq.ft.



GROUND FLOOR PLAN 'B'
764 sq.ft.



SECOND FLOOR PLAN 'B'
781 sq.ft.
- 8 sq.ft. OPEN SPACE
= 773 sq.ft.